

where your data matters

Customer  
Case Study

## An Invaluable Marine Data Solution for Lloyd's Register

“OceanWise and its partners supply innovative marine data products that add real value to our business. They know their stuff, are easy to work with and highly responsive. It's exactly what we want.”

*Sam Franklin – IRIS & Web Services  
Product Manager - Lloyd's Register*



## The Requirement

Mapping large marine areas requires significant volumes of data. 'Off-the-shelf' marine seabed data is traditionally available through individual navigational charts but this presents a data management challenge and can be of limited resolution. A high-resolution digital seabed survey can cost millions of pounds but, faced with the challenge of accurately planning the installation of marine cables and pipelines, it is often the only option for acquiring data. Both scenarios demonstrate the challenges of obtaining accurate, affordable and easy to use marine mapping data.

Lloyd's Register required a solution which would supply maritime data in a user-friendly and time-saving format. The company also wanted access to the 'best off-the-shelf' seabed elevation data to optimise high-value digital surveys. **OceanWise** were able to supply solutions in innovative ways that led to Lloyds Register clients to ask "how did you get data like that?"

## Key Benefits for Lloyd's Register

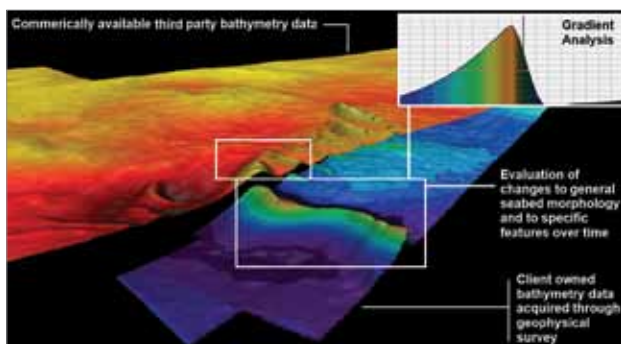


- **Authoritative marine base map, delivered in a modern format designed for web mapping applications**
- **'Always on' Raster Charts web mapping service for use in desktop and web geospatial applications**
- **Ability to access detailed and accurate models of the seabed using the most recent single and multi-beam survey data available**
- **An affordable and time-efficient service providing de-conflicted nautical chart data that is extremely useful for offshore/ maritime desktop studies**

## Methodology

As Sam Franklin explains, the **OceanWise** approach to chart data puts the user first. "What **OceanWise** has done is produce a single data product that joins individual hydrographic charts into a seamless map service. This avoids the overhead of managing a significant number of individual chart layers on a web map, each with a bespoke extent and scale. We subscribe to the **Raster Chart** map service to give us a scalable chart product in a modern web-friendly format."

Client feedback through consuming **OceanWise** data via Lloyd's Register's innovative IRIS platform\* has been



\*IRIS is Lloyd Register's Project Support and Data Management platform that combines marine spatial data from **OceanWise** with offshore operational overlays like real-time vessel tracking and met-ocean forecasts.

highly positive says Sam. "The **OceanWise Raster Chart** map service is extremely useful as a marine base map, as it provides the familiar nautical chart cartographic style background, allowing us to overlay high resolution survey-acquired offshore project data and real-time vessel positioning. Other suppliers may have the raw data but they haven't solved the big problem of joining all those hydrographic charts together - that's the value of the **OceanWise** product."

**OceanWise** seabed surface data also helped Lloyd's Register reduce costs and save time in a marine cable routing study. As Sam explains "During a seabed survey, we discovered there were significant geo-constraints along a proposed marine power cable route. Using the off the-shelf **OceanWise Marine Themes Digital Elevation Model (DEM)** product, we were able to quickly engineer other cable routing options without the need for a new wide-area survey campaign. After evaluating different options, we developed an optimised route cable corridor for a follow up high resolution digital survey. The **OceanWise DEM** provided a cost effective and time efficient solution and our client was extremely pleased with the result."



Enjoy the confidence of working with marine data experts  
For information contact [info@oceanwise.eu](mailto:info@oceanwise.eu) or phone +44 (0)1420 768262  
[www.oceanwise.eu](http://www.oceanwise.eu)

